



NVIDIA Control Panel Quick Start Guide

Release 190 v1.0 | July 2009

User's Guide



TABLE OF CONTENTS

1 Introduction	1
About the NVIDIA Control Panel	2
Overview	2
Feature Differences from the Classic Control Panel	2
Changes in Release 190	3
Supported Operating Systems.....	4
Supported NVIDIA Products.....	5
Supported Languages.....	5
Other NVIDIA Software Applications	5
Getting Support and Information	6
Online Help	6
Technical Support.....	6
System Information.....	6
2 Understanding the NVIDIA Control Panel	7
Opening and Closing the New NVIDIA Control Panel.....	8
About the NVIDIA Control Panel Interface.....	9
Using the Main Task Area	10
Using the <i>Select a Task</i> Pane	10
Using the Tool Bar	11
Using the Menu Bar	13
3 Accomplishing NVIDIA Control Panel Tasks	17
Starting the NVIDIA Control Panel	18
Accomplishing NVIDIA Control Panel Tasks	19
Guide to Locating Tasks	19
NVIDIA Control Panel Groups.....	21

LIST OF FIGURES

Figure 2.1 NVIDIA Control Panel Home Page-Windows XP.....	9
Figure 2.2 NVIDIA Control Panel Home Page-Windows Vista.....	10
Figure 2.3 NVIDIA Control Panel <i>Select a Task</i> pane	11
Figure 2.4 Navigation History Menu	12
Figure 2.5 NVIDIA Control Panel View Settings	12

LIST OF TABLES

Table 2.1	File Menu Commands	13
Table 2.2	Edit Menu Commands	14
Table 2.3	View Menu Commands	14
Table 2.4	Help Menu Commands	15
Table 2.5	Profiles Menu Commands.....	15
Table 2.6	Display Menu Commands	16
Table 2.7	3D Settings Menu Commands	16
Table 2.8	Workstation Menu Commands	16
Table 3.1	Graphics Driver Tasks in the NVIDIA Control Panel.....	19

01 INTRODUCTION

This *quick start* is addressed to users of the NVIDIA[®] Control Panel software. This guide focuses on getting you up and running with your NVIDIA software.

For technical details on the features and benefits of the NVIDIA Control Panel software and details about supported products, drivers, and other software, refer to the NVIDIA web page — www.nvidia.com.

This chapter discusses the following major topics:

- ▶ “About the NVIDIA Control Panel” on page 2
- ▶ “Getting Support and Information” on page 6

About the NVIDIA Control Panel

Welcome to the NVIDIA Control Panel, designed for Microsoft® Windows® XP, Windows Vista, and Windows 7. You can use NVIDIA Control Panel to control your NVIDIA hardware and access other NVIDIA software installed on your system.

Overview

In addition to setting up basic display configurations such as display resolution, refresh rate, and multiple display use, you can:

- ▶ Tune your 3D settings with real-time preview to maximize performance or image quality
- ▶ Customize how 3D applications work in your system
- ▶ Adjust your screen colors and contrast
- ▶ Set custom timings
- ▶ Control video image settings
- ▶ Change your HDTV format
- ▶ Control your notebook system power using PowerMizer
- ▶ Control special workstation features such as Frame Synchronization.

Feature Differences from the Classic Control Panel

The following are features that were available in the NVIDIA classic control panel, but which are *not* available in the new NVIDIA Control Panel:

- ▶ Creating/Importing Color Profiles
- ▶ High Resolution Scalable Desktop
- ▶ Video Zoom
- ▶ Full-screen video mirroring
- ▶ Edge Blending
- ▶ nView Desktop Manager

nView Desktop Manager is available through the Windows control panel as a separate applet (Windows XP only).
- ▶ MultiView Display Mode (for NVIDIA Quadro NVS graphics cards)

As of driver Release 173, MultiView is available from the Windows Display Properties->Settings->Advanced tab for Windows XP only.

Changes in Release 190

Display Settings Pages

- ▶ The following pages have been revised to include TV settings controls:
 - **Adjust Desktop Color Settings**
Now includes controls to adjust TV color settings.
 - **Change Resolution**
Now includes controls to adjust TV and HDTV signal formats and resolution.
 - **Adjust Desktop Size and Position**
Now includes controls to adjust the TV screen size and position, and to resize the HDTV desktop.
- ▶ The following pages and links now appear in the Display category:
 - **HDCP Status** page
 - **Digital Audio** page
- ▶ After resizing the HDTV desktop, the new resolution created is now added to the list of available resolutions for that display, and also added to the resolution list within the game or application.
- ▶ The controls in the Manage Custom Resolutions page are now located in the **Change Resolution** page.

Video & Television Pages

- ▶ The following pages and controls have been moved to the Display category:
 - **Adjust Television Color Settings** page (see Display->Adjust Desktop Color Settings)
 - **Change the signal or HD format** page (see Display->Change Resolution)
 - **Select Digital color format** page (see Display->Change Resolution)
 - **Adjust screen size and position** page (see Display->Adjust Desktop Size and Position)
 - **Resize HDTV desktop** page (see Display->Adjust Desktop Size and Position)
 - **HDCP Status** page
 - **Digital Audio** page

3D Settings Pages

- ▶ **Preferred Refresh Rate** (Windows Vista and later)
The Preferred Refresh Rate control lets you override the refresh rate limitations imposed by the 3D application for the indicated monitor.

► **Power Management mode** (Windows Vista and later)

Many NVIDIA graphics cards support multiple performance levels so that the PC can save power when full graphics performance is not required. To provide more control over these power management capabilities, NVIDIA has added the Power Management Mode control. The control consists of two settings—*Adaptive* and *Prefer Maximum Performance*.

Adaptive: This is the default setting in which the graphics card monitors GPU usage and seamlessly switches between modes based on the performance demands of the application. This allows the GPU to always use the minimum amount of power required to run a given application, and can allow even older 3D games to run in lower power modes if the game does not require full 3D performance. NVIDIA recommends this setting for best overall balance of power and performance.

Prefer Maximum Performance: This setting lets you maintain the card at its maximum performance level when 3D applications are running regardless of GPU usage. This option can be set Globally (for all 3D applications), or an application profile can be created under Program Settings to set the preference for a particular 3D application.

This feature is supported only on select GeForce 9 Series and later GPUs and applies only to DirectX and OpenGL-based applications.

Supported Operating Systems

NVIDIA Release 190 Graphics drivers are available for the following Microsoft® Windows® operating systems:

- Windows XP Media Center Edition 2005 Update Rollup 2
- Windows XP Media Center Edition 2005/2004
- Windows XP Professional
- Windows XP Home Edition
- Windows XP Professional x64 Edition
- Windows Server 2003 x64 Edition
- Windows Vista Home Basic
- Windows Vista Home Premium
- Windows Vista Business
- Windows Vista Enterprise Edition
- Windows Vista Ultimate
- Windows 7 32-bit and 64-bit Editions

Supported NVIDIA Products

Refer to the release notes and NVIDIA driver download site for the list of products supported by the driver version that you have installed on your computer.

Supported Languages

The NVIDIA Graphics Driver supports the following languages in the NVIDIA Control Panel:

English (USA)	German	Portuguese (Euro/Iberian)
English (UK)	Greek	Russian
Arabic	Hebrew	Slovak
Chinese (Simplified)	Hungarian	Slovenian
Chinese (Traditional)	Italian	Spanish
Czech	Japanese	Spanish (Latin America)
Danish	Korean	Swedish
Dutch	Norwegian	Thai
Finnish	Polish	Turkish
French	Portuguese (Brazil)	

Other NVIDIA Software Applications

If installed, other NVIDIA software that you can access from the NVIDIA Control Panel includes:

- ▶ NVIDIA System Tools–Performance group and System Update
- ▶ NVIDIA Stereoscopic 3D
- ▶ NVIDIA MediaShield™
- ▶ NVIDIA Network Access Manager

See the respective user documentation for information about these applications and instructions on how to use them.

Getting Support and Information

Online Help

- ▶ To open the online help, either :
 - Press **F1** on your keyboard, or
 - Select **Help** from the NVIDIA Control Panel menu bar and then select **NVIDIA Control Panel Help**.
- ▶ Help on various topics can be viewed using the Contents, Index, or Search tabs.

Also, when a setting on the control panel is disabled (grayed out) and you place the cursor on the setting, the User Assistance area indicates the reason it is disabled.

Technical Support

To access the NVIDIA Technical Support web page go to the following web address:

<http://www.nvidia.com/page/support.html>

System Information

You can get detailed information about your system and the NVIDIA Control Panel configuration as well as version and copyright information.

- ▶ To view copyright and version information about the NVIDIA Control Panel:
 - From the **Help** menu, select **About NVIDIA Control Panel**.
- ▶ To view detailed system information:
 - Open the System Information dialog box by either selecting *System Information* from the **Help** menu, or by clicking the **System Information** link at the lower left corner of the NVIDIA Control Panel.
 - Click any of the tabs in the System Information dialog box.

02 UNDERSTANDING THE NVIDIA CONTROL PANEL

This chapter describes the NVIDIA Control Panel in the following sections:

- ▶ “Opening and Closing the New NVIDIA Control Panel” on page 8
- ▶ “About the NVIDIA Control Panel Interface” on page 9

Opening and Closing the New NVIDIA Control Panel

► You can open the NVIDIA Control Panel in several ways:

- Right-click the Windows desktop, then click **NVIDIA Control Panel** from the context menu, or

For Windows XP

- From the Windows **Start** menu, select **Control Panel**, then in the **Control Panel** window, double-click on the NVIDIA Control Panel icon.



NVIDIA
Control Panel

For Windows Vista/Windows 7

- From the *Classic View* of the Windows Control Panel, click the NVIDIA Control Panel icon, or



NVIDIA
Control Panel

- From the *Control Panel Home* view of the Windows Control Panel, click **Additional Options** and then click **NVIDIA Control Panel** from the Additional Options page.

► To close the NVIDIA Control Panel,

- From the **File** menu, select **Exit**, or
- Click the **Close** box in the upper right corner of the program window.

About the NVIDIA Control Panel Interface

The NVIDIA Control Panel provides an easy-to-use interface for managing your system.

When you start the program for the first time, the NVIDIA Control Panel opens to the first page listed in the navigation tree. On subsequent visits, the control panel reopens to the last page visited. The NVIDIA Control Panel user interface consists of these main areas, as shown in [Figure 2.1](#) and [Figure 2.2](#):

- ▶ Main Task Area
- ▶ Select a Task (Navigation tree)
- ▶ Menu bar
- ▶ Toolbar .

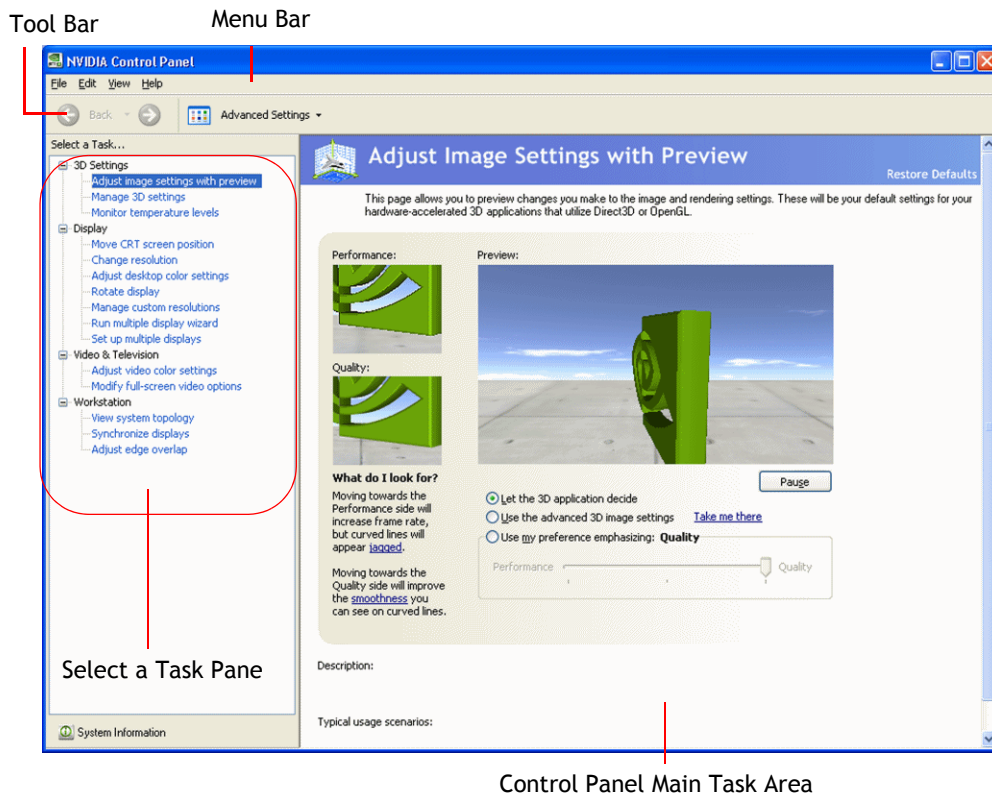


Figure 2.1 NVIDIA Control Panel Home Page-Windows XP

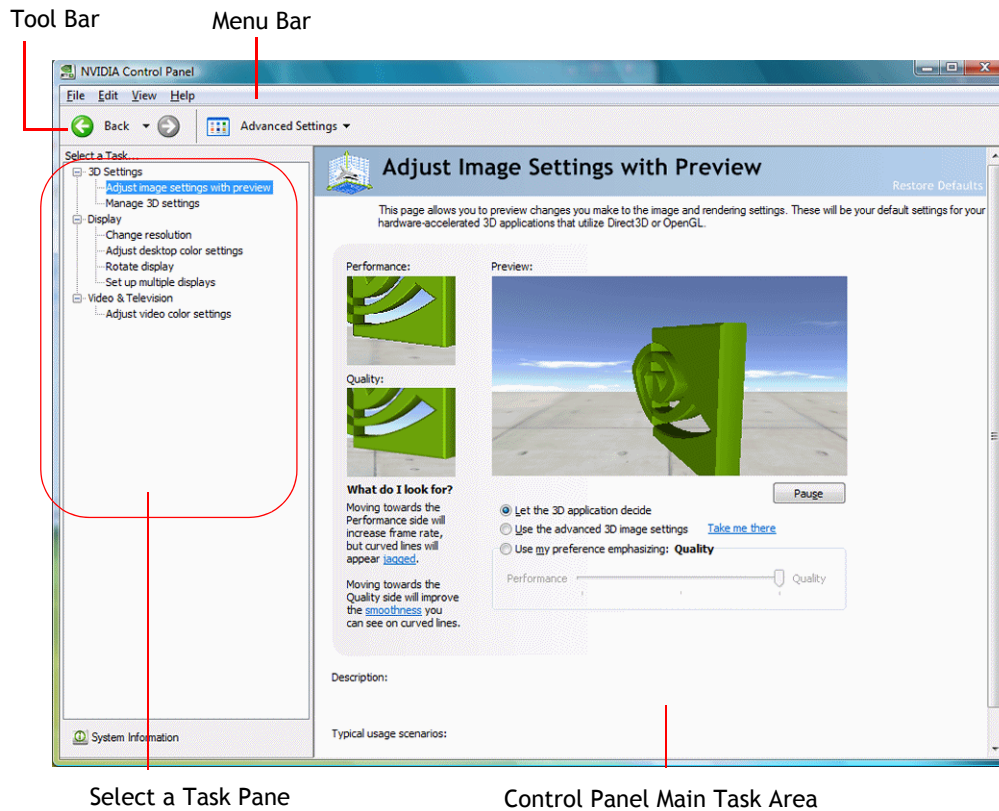


Figure 2.2 NVIDIA Control Panel Home Page-Windows Vista

Using the Main Task Area

The main task area, in the right pane, displays the application task pages. This area of the screen is where you will focus most of your attention as you use the NVIDIA Control Panel to accomplish your goals. You can access specific pages using the navigation tree in the *Select a Task* pane.

Using the *Select a Task* Pane

The navigation tree in the *Select a Task* pane shows all the primary NVIDIA Control pages that are installed on your system.

The pages are grouped according to the same categories that existed in the previous version of the NVIDIA Control Panel.

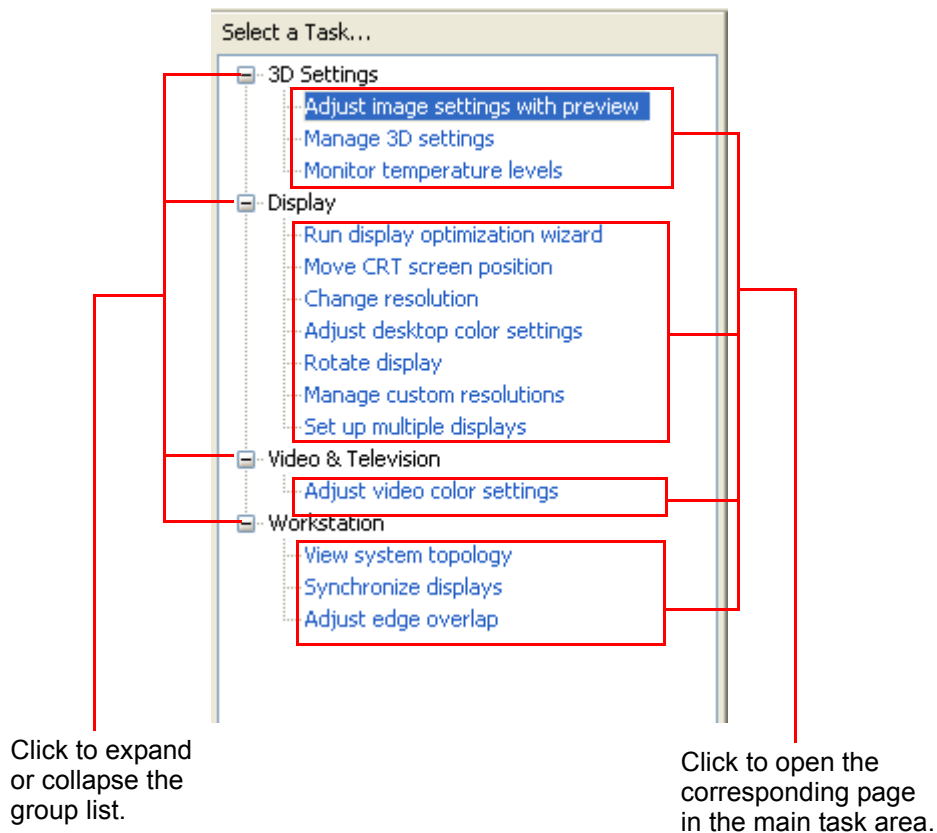


Figure 2.3 NVIDIA Control Panel *Select a Task* pane

Using the Tool Bar

The *Toolbar* provides quick back and forth navigation between pages, and also lets you choose a view setting.

Using the Navigation Buttons

The back and forward buttons let you navigate sequentially among pages that you have visited.

You can also navigate directly to a previously visited page by clicking the list arrow next to the back button. The drop-down menu lists all the previously visited pages in the queue. Click the page that you want.

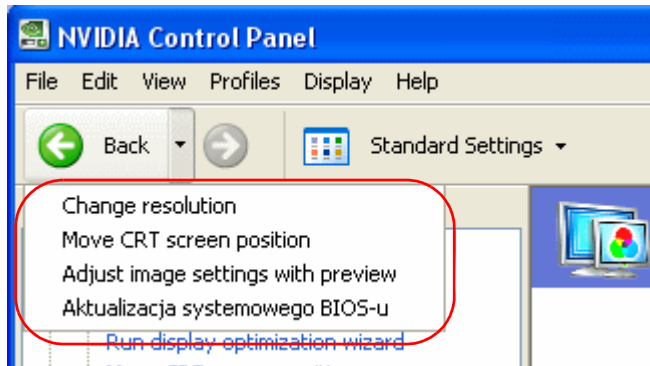


Figure 2.4 Navigation History Menu

Working with View Settings

The currently selected view determines what options on each page are available..

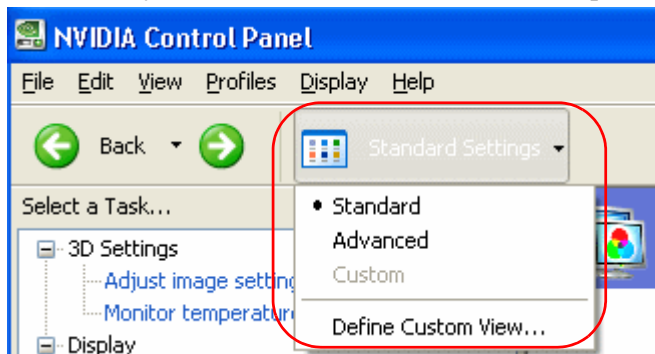


Figure 2.5 NVIDIA Control Panel View Settings

There are three available views:

- ▶ Standard
- ▶ Advanced
- ▶ Custom

Most commands are available for both Standard and Advanced views. However, some options are available only if the Advanced view is selected before opening the page. Also, task page options may differ depending on the selected view. If the command you're looking for is not displayed, select a different view.

To change the view:

- ▶ From the **View** menu, select **Standard**, **Advanced**, or **Custom**.

For the Custom command to be available, you must define a custom view as described in the following section.

Defining Custom Views

You can customize NVIDIA Control Panel to display only the task pages you want to see and use.

To specify which the pages to display:

- 1 Select **View > Define Custom View...** or for quicker access, use the toolbar if you have it enabled.
- 2 On the **Create Custom View** page, select (check) the check boxes for the pages that you want to view and click **OK**.
- 3 To leave the Custom View mode, select either **Standard** or **Advanced** from the **View** menu or for quicker access, use the toolbar if you have it enabled.
- 4 To switch back to your custom view, select **Custom**.

Using the Menu Bar

The *Menu bar* contains standard Windows menus and menus specific to the NVIDIA Control Panel, such as the View and Profiles menus.

Menus that are available on the menu bar may vary, depending on the NVIDIA Control Panel group (such as, Display, Mobile, 3D Settings, or other group) you are using.

File Menu

Commands related to printing, applying changes, and exiting the program are available on the **File** menu.

Table 2.1 File Menu Commands

File Menu Command	Description
Page Setup ...	Set up the current task page for printing. <i>This control may not be available.</i>
Print...	Print the current task page. <i>This control may not be available.</i>
Print Preview....	Preview the page before sending it to the printer. <i>This control may not be available.</i>
Exit	Close the NVIDIA Control Panel program.

Edit Menu

Commands related to cutting, copying, pasting, and selecting items are available on the **Edit** menu.

Table 2.2 Edit Menu Commands

Edit Menu Command	Description
Cut	Cut the selected text and place in the clipboard. <i>This control may not be available.</i>
Copy	Copy the selected text and place in the clipboard. <i>This control may not be available.</i>
Paste	Paste the text currently in the clipboard to the location of the Windows cursor. <i>This control may not be available.</i>
Select All	Select all items on the current page. <i>This control may not be available.</i>

View Menu

Commands related to viewing the various pages in the NVIDIA Control Panel application modules are available on the **View** menu.

Table 2.3 View Menu Commands

View Menu Command	Description
Standard	Select to view and access the majority of commonly used and simpler tasks in the NVIDIA Control Panel applications. When the Standard command appears with a check mark, this means that the Standard view is currently active on your NVIDIA Control Panel active.
Advanced	Select to view and access certain complex tasks in the NVIDIA Control Panel applications. These tasks often require some advanced experience using graphics hardware and software (drivers). When the Advanced command appears with a check mark, this means that the Advanced view is currently active on your NVIDIA Control Panel.
Custom	Select to choose a custom view. This command appears on the View menu <i>only</i> if you have used the Define Custom Views command to customize showing/hiding specific screens.
Define Custom View	To see only those application pages you want to see and use based on the application modules (Display, 3D Settings, etc.) that are installed on your system, select Define Custom Views from the View menu.

Table 2.3 View Menu Commands

View Menu Command	Description
Add Desktop Context Menu	This is selected by default, and adds the NVIDIA Control Panel menu item to the desktop context menu.
Show Notification Tray Icon	(Windows XP only) Select to show the NVIDIA Control Panel notification tray icon in the Windows taskbar notification area. Clicking the NVIDIA Control Panel notification icon offers a quick way to configure key NVIDIA Control Panel settings.

Help Menu

Commands related to accessing help, system information, and copyright and version information are available on the **Help** menu.

Table 2.4 Help Menu Commands

Help Menu Command	Description
NVIDIA Control Panel Help	Access the NVIDIA Control Panel online help.
System Information	View detailed information about your system and the NVIDIA Control Panel configuration.
About NVIDIA Control Panel	View NVIDIA Control Panel version and copyright information.

Group-Specific Menus

These menus appear only when pages from a specific group are open.

Profiles Menu

Commands related to saving, loading, and deleting profiles are available on the **Profiles** menu.

Table 2.5 Profiles Menu Commands

Profiles Menu Command	Description
Load...	Load a profile of display settings you have previously saved. Click to open the Load Desktop Profile dialog box and select a .nvp file.
Save...	Save the current configuration to a profile file. Click to open the Save Desktop Profile and enter a name and path for the .nvp file.
Delete...	Delete a profile. Click to open the Delete Desktop Profile dialog box and locate a profile to delete.

Display Menu

This menu item appears only when a Display group page is open.

Table 2.6 Display Menu Commands

Display Menu Command	Description
Identify Displays	Select to identify the displays configured with your system.

3D Settings Menu

This menu item appears only when a 3D Settings group page is open on an SLI system.

Table 2.7 3D Settings Menu Commands

3D Settings Menu Command	Description
Show SLI Visual Indicators	Select to verify that SLI rendering is enabled and working.

Workstation Menu

This menu item appears only when a Workstation group page is open.

Table 2.8 Workstation Menu Commands

Workstation Menu Command	Description
Refresh View	Select to refresh the graphical representation of the displays and graphics cards installed on your system.

03 ACCOMPLISHING NVIDIA CONTROL PANEL TASKS

This chapter provides instructions on how to use the NVIDIA Control Panel to accomplish common tasks. It contains the following sections:

- ▶ Starting the NVIDIA Control Panel
- ▶ Accomplishing NVIDIA Control Panel Tasks



Note: For Windows Vista/Windows 7 - Several features are currently under development and are not yet supported in the NVIDIA Control Panel. Consult the release notes for the latest list of unsupported features.

Starting the NVIDIA Control Panel

1 Launch the NVIDIA Control Panel:

Under Windows XP:

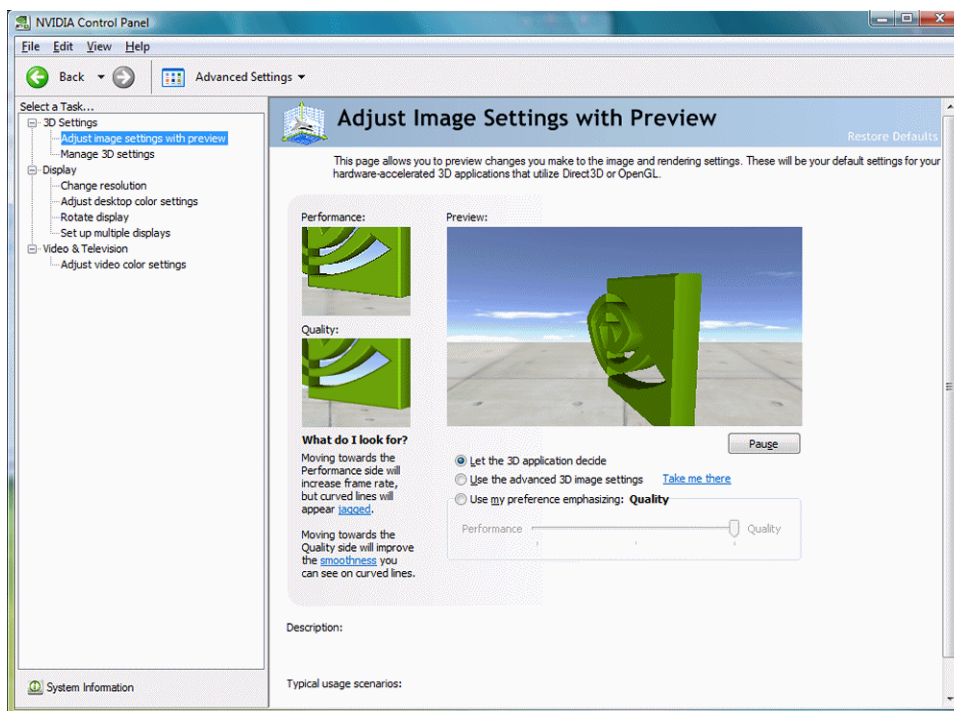
- Right-click the Windows desktop, then click **NVIDIA Control Panel** from the context menu, or
- From the Windows **Start** menu, select **Control Panel**, then in the **Control Panel** window, double-click the NVIDIA Control Panel icon.



Under Windows Vista/Windows 7:

- Right-click the Windows desktop, then click **NVIDIA Control Panel** from the context menu, or
 - a Click the Start icon, then from the Start menu click **Control Panel**.
 - b From the *Classic View* of the Windows Vista Control Panel, click the NVIDIA Control Panel icon, or

From the *Control Panel Home* view of the Windows Vista Control Panel, click **Additional Options** and then click **NVIDIA Control Panel** from the Additional Options page.



The groups that appear in the *Select a Task* pane depend on the NVIDIA hardware software is installed on your system. For example, the Mobile group is not available on desktop systems.

- 2 From the navigation tree in the *Select a Task* pane, click one of the links to open a specific task page.

Each group in the navigation tree lists different tasks that you can accomplish, and each task page provides instructions on how to accomplish what you want. Move the cursor over listed options to see a description and typical usage scenario for that option.

Detailed instructions for each task are also available through the online help.

Accomplishing NVIDIA Control Panel Tasks

Guide to Locating Tasks

The NVIDIA Control Panel provides an intuitive layout for locating graphics driver controls, including most of the controls that were available with the Classic NVIDIA Control Panel.

[Table 3.1](#) lists the features as presented in the Classic Control Panel and identifies the page in the NVIDIA Control Panel where you can find the corresponding controls.

Table 3.1 Graphics Driver Tasks in the NVIDIA Control Panel

Feature	NVIDIA Control Panel Group - Page	Notes
Advanced Timings	Display - Change Resolution	
Antialiasing	3D Settings - Manage 3D Settings	
Application Profiles	3D Settings - Manage 3D Settings	
Color Depth	Display - Change Resolution	
Custom Timings	Display - Change Resolution	
Desktop Color Settings	Display - Adjust Desktop Color Settings	
Driver Settings	3D Settings - Manage 3D Settings	
Desktop Overlap	Workstation - Adjust Edge Overlap	Available only with NVIDIA Quadro FX cards.
Frame Synchronization	Workstation - Synchronize Displays	Available with NVIDIA Quadro G-Sync cards.
HDTV Setup	Display - Change Resolution	
Multi-display configuration	Display - Set Up Multiple Dislays	

Table 3.1 Graphics Driver Tasks in the NVIDIA Control Panel

Feature	NVIDIA Control Panel Group - Page	Notes
nView Clone Mode	Display - Set Up Multiple Displays	
nView Span Modes	Display - Set Up Multiple Displays	Available only with Windows XP.
NVRotate	Display - Rotate Display	
Performance and Quality Settings	3D Settings - Adjust Image Settings with Preview	
PowerMizer	Mobile - Change PowerMizer Settings	Available only with notebook computers. Available only with Windows XP.
Refresh Rate Settings	Display - Change Resolution	
Resolution Settings	Display - Change Resolution	
Screen Position on CRT	Display - Adjust Desktop Size and Position	
Screen Position on TV	Display - Adjust Desktop Size and Position	
SDI (Graphics to SDI Output)	Workstation - Send Graphics to SDI Output	Available only with NVIDIA Quadro FX SDI cards.
SLI Configuration	3D Settings - Set SLI Configuration	
Temperature Settings	Performance	Requires NVIDIA System Tools software
TV Setup	Display - Change Resolution	
Video Color Settings	Video - Adjust Video Color Settings	
Overclocking	Performance	Requires NVIDIA System Tools software

NVIDIA Control Panel Groups

This section provides an overview of the NVIDIA Control Panel groups.

- ▶ “Using the Display Pages” on page 21
- ▶ “Using the Video Pages” on page 22
- ▶ “Using the 3D Settings Pages” on page 22
- ▶ “Using the Stereoscopic 3D Pages” on page 22
- ▶ “Using the Mobile Pages” on page 22
- ▶ “Using the Workstation Pages” on page 23
- ▶ “Using the Networking Pages” on page 23
- ▶ “Using the Storage Pages” on page 23
- ▶ “Using the Performance Pages” on page 24
- ▶ “Using the System Update Pages” on page 24



Note: For Windows Versions - Support for some features under Windows Vista or Windows 7 is in development and may not be available with your GeForce graphics driver version. Consult the release notes for the latest list of unsupported features.

Using the Display Pages

The actual tasks available on your system depend on your system hardware, such as the number and type of displays connected. Use the Display group pages to:

- ▶ Run the wizard to optimize your display configuration.
- ▶ Change the display resolution.
- ▶ Change the scaling on your flat panel display.
- ▶ Adjust desktop color settings.
- ▶ Rotate the display.
- ▶ Adjust custom timings.
- ▶ Configure multiple displays, including Spanning or Clone modes.
Spanning modes are available only with Windows XP.
- ▶ Adjust your television picture quality and video color settings for the best possible viewing in its environment.
- ▶ Change the position and size of the desktop/video to best fit your television or HDTV (high definition television) screen.
- ▶ Change the signal format to use for your standard television or HDTV as well as change country-specific signal or the HDTV format.

- ▶ Verify the HDCP capability of your system.
- ▶ Access digital audio controls.

Using the Video Pages

The actual tasks available on your system depend on your system hardware, such as whether or not you have a TV connected and enabled. Use the Video & Television page to:

- ▶ Adjust video and image color settings.

Using the 3D Settings Pages

The actual tasks available on your system depend on your system hardware, such as whether or not you have an SLI-ready system. Use the 3D Settings page to:

- ▶ Change the image and rendering settings of your 3D applications and games that utilize Direct3D and OpenGL technology.
- ▶ Assign specific 3D settings to a game so that these settings automatically load when a game is launched (available under Advanced view).
- ▶ Set up your SLI or multi-GPU configuration as well as PhysX configuration.

GPU temperature monitoring and GPU overclocking features are not included in the 3D Settings page. To use this functionality you must install NVIDIA nTune software.

Using the Stereoscopic 3D Pages

The Stereoscopic 3D pages are part of the NVIDIA 3D Vision software for viewing 3D programs and games in stereoscopic 3D. Use the Stereoscopic 3D pages to:

- ▶ Control stereoscopic 3D settings.
- ▶ View game compatibility.

Using the Mobile Pages

The Mobile group is available if the NVIDIA software is installed on a notebook computer under Windows XP.

Use the Mobile page to extend your notebook computer's battery life using NVIDIA PowerMizer technology

Using the Workstation Pages

The Workstation group is available if you have an NVIDIA Quadro FX graphics card installed.

The actual tasks available depend on which NVIDIA Quadro FX product you have installed. Use the Workstation page to:

- ▶ Synchronize your displays using frame sync or genlock technology
- ▶ View a graphical representation of the displays and graphics cards installed on your system.
- ▶ Manage serial digital interface (SDI) output (requires NVIDIA Quadro FX SDI solution.)
- ▶ Overlap the edges of adjacent displays.
Display edge *blending* is no longer available.

Using the Networking Pages

The Networking group pages are part of the nForce drivers Networking software for NVIDIA nForce-based PCs.

Use the Networking pages to optimize your network performance and increase your network bandwidth with the following technologies:

- ▶ **NVIDIA FirstPacket** offers a new way to manage the traffic on your personal computer, allowing you to more effectively manage and improve the performance of networked games and other applications that are sensitive to network delay (latency), such as Voice-over-IP (VoIP).
- ▶ **NVIDIA TCP/IP Acceleration** technology is a networking solution that moves the processing of TCP/IP network traffic from your computer's CPU to its nForce hardware resulting in greatly improved system performance.
- ▶ **NVIDIA Teaming** technology combines all the NVIDIA Ethernet interfaces on your system to form a team, resulting in increased bandwidth and network redundancy.
- ▶ **Alert Standard Format (ASF)** controls lets you set up alerts and remote system management in an OS-present or OS-absent environment.

Using the Storage Pages

The Storage group pages are part of the nForce drivers MediaShield Storage software for NVIDIA nForce-based PCs.

Use the Storage pages to

- ▶ Create and manage RAID 0, RAID 1, RAID 0+1, RAID 5, and spanning arrays.
- ▶ Run SMART tests on your RAID array disk drives.

Using the Performance Pages

The Performance group pages are part of the nForce drivers System Tools software for NVIDIA nForce-based PCs.

Use the Performance pages to:

- ▶ Manage system tuning and profiles for nForce MCP clocks, voltages, timings, and fans.
- ▶ Manage Enthusiast System Architecture (ESA) components.
- ▶ View detailed system information for your nForce-based PC.
- ▶ Overclock your GeForce GPU.

Using the System Update Pages

The System Update pages are part of the nForce drivers System Tools software for NVIDIA nForce-based PCs.

Use the system update pages to:

- ▶ Automatically check for nForce and GeForce driver updates.
- ▶ Update your system BIOS.
- ▶ Update firmware for the Enthusiast System Architecture (ESA) components.

Notice

ALL NVIDIA DESIGN SPECIFICATIONS, REFERENCE BOARDS, FILES, DRAWINGS, DIAGNOSTICS, LISTS, AND OTHER DOCUMENTS (TOGETHER AND SEPARATELY, "MATERIALS") ARE BEING PROVIDED "AS IS." NVIDIA MAKES NO WARRANTIES, EXPRESSED, IMPLIED, STATUTORY, OR OTHERWISE WITH RESPECT TO THE MATERIALS, AND EXPRESSLY DISCLAIMS ALL IMPLIED WARRANTIES OF NONINFRINGEMENT, MERCHANTABILITY, AND FITNESS FOR A PARTICULAR PURPOSE.

Information furnished is believed to be accurate and reliable. However, NVIDIA Corporation assumes no responsibility for the consequences of use of such information or for any infringement of patents or other rights of third parties that may result from its use. No license is granted by implication of otherwise under any patent rights of NVIDIA Corporation. Specifications mentioned in this publication are subject to change without notice. This publication supersedes and replaces all other information previously supplied. NVIDIA Corporation products are not authorized as critical components in life support devices or systems without express written approval of NVIDIA Corporation.

HDMI

HDMI, the HDMI logo, and High-Definition Multimedia Interface are trademarks or registered trademarks of HDMI Licensing LLC.

Macrovision Compliance Statement

NVIDIA Products that are Macrovision enabled can only be sold or distributed to buyers with a valid and existing authorization from Macrovision to purchase and incorporate the device into buyer's products.

Macrovision copy protection technology is protected by U.S. patent numbers 5,583,936; 6,516,132; 6,836,549; and 7,050,698 and other intellectual property rights. The use of Macrovision's copy protection technology in the device must be authorized by Macrovision and is intended for home and other limited pay-per-view uses only, unless otherwise authorized in writing by Macrovision. Reverse engineering or disassembly is prohibited.

OpenCL

OpenCL is a trademark of Apple Inc. used under license to the Khronos Group Inc.

Trademarks

NVIDIA and the NVIDIA logo are trademarks or registered trademarks of NVIDIA Corporation in the United States and other countries. Other company and product names may be trademarks of the respective companies with which they are associated.

Copyright

© 2009 NVIDIA Corporation. All rights reserved.