



# Release 450 Driver for Windows, Version 452.06

Windows 10 / Windows 8.1 / Windows 8 / Windows 7

## Release Notes

# TABLE OF CONTENTS

<b>1 Introduction to Release Notes.....</b>	<b>1</b>
Structure of the Document .....	1
Changes in this Edition .....	1
<b>2 Release 450 Driver Changes .....</b>	<b>2</b>
Version 452.06 WHQL Highlights .....	3
Requirement for Obtaining NVIDIA Drivers for Windows 7.....	3
Existing Support .....	3
Software Module Versions .....	3
What's New in Version 452.06 WHQL .....	4
What's New in Release 450 .....	5
Discontinued Support .....	6
Limitations in This Release .....	7
Changes and Fixed Issues in Version 452.06 .....	9
Fixed Issues in this Release .....	9
Open Issues in Version 452.06 WHQL.....	10
Windows 7 Issues .....	10
Windows 10 Issues .....	10
Issues Not Caused by NVIDIA Drivers .....	12
Windows 10 Considerations.....	12
Windows 7 Considerations.....	12
Operating System Issues .....	13
Application Issues .....	13
<b>3 The Release 450 Driver .....</b>	<b>14</b>
About the Release 450 Driver .....	14
Driver Security.....	15
Restricting/Enabling Access to GPU Performance Counters .....	15
Advanced Driver Information .....	16
Updating the NVIDIA VirtualLink PPC Firmware .....	16
Differing GPU Voltages in SLI Mode .....	16
3D Compatibility Mode .....	16
Help for Resizing Your HDTV Desktop.....	17
Understanding the NVIDIA System Information Window>DirectX Information ....	18
Known Product Limitations .....	20
Issues Installing the NVIDIA Control Panel from the Windows Store.....	21
Windowed NVIDIA G-SYNC is Disabled for Multi-monitor System Video Playback	21

## TABLE OF CONTENTS

GPU Temperature Reported Incorrectly on Optimus Systems.....	22
Damaged or Missing WMI Service Prevents NVIDIA Driver Installation .....	22
Screen Turns Black During Clean Driver Overinstall on Windows 8.1 Optimus	
Notebook .....	23
Total Available Graphics Memory Reported Incorrectly .....	23
Increasing 4-way SLI/Multi-GPU Performance .....	24
No PhysX Acceleration Using the GPU.....	24
NVIDIA PhysX Software Cannot Be Installed/Uninstalled in Windows Safe Mode	25
Do Not Use Windows Rollback for Graphics Drivers.....	25
Uninstalling Drivers Using Device Manager is Not Supported .....	25
Changing Primary Display Across SLI GPUs Slower Than Expected .....	26
Using HDMI Audio with Displays That Have a High Native Resolution.....	26
Using HDMI/DisplayPort Audio in Dualview or Clone Mode.....	27
Flat Panel Scaling Controls Not Functional for Some TV Modes and Displays ...	27
GPU Runs at a High Performance Level in Multi-display Modes .....	28
1280 × 1024 @ 60 Hz Not Available on BenQ FP241W Monitors .....	28
Hardware and Software Support .....	29
Supported Operating Systems.....	29
Support for OpenCL 1.2 .....	29
Supported NVIDIA Desktop Products .....	29
Supported NVIDIA Notebook Products .....	31
Supported Languages.....	32
Driver Installation.....	34
Minimum Hard Disk Space .....	34
Before You Begin .....	34
Installation Instructions .....	34

## LIST OF TABLES

Table 3.1 Supported NVIDIA Desktop GPUs .....	29
Table 3.2 Supported NVIDIA Notebook GPUs .....	31

---

# Chapter 1. Introduction to Release Notes

This edition of *Release Notes* describes the Release 450 family of NVIDIA<sup>®</sup> graphics drivers (versions 450.xx to 454.xx) for Microsoft<sup>®</sup> Windows<sup>®</sup> 7 and later<sup>1</sup>. NVIDIA provides these notes to describe performance improvements and bug fixes in each documented version of the driver.

## Structure of the Document

This document is organized in the following sections:

- ▶ [“Release 450 Driver Changes” on page 2](#) gives a summary of changes, and fixed and open issues in this version.
- ▶ [“The Release 450 Driver” on page 14](#) describes the NVIDIA products and languages supported by this driver, the system requirements, and how to install the driver.

## Changes in this Edition

This edition of the *Release Notes* for Windows includes information about NVIDIA graphics driver version 452.06 WHQL and lists changes made to the driver since driver version 446.14.

These changes are discussed beginning with the chapter [“Release 450 Driver Changes” on page 2](#).

---

1. Includes Windows 7, Windows 8, Windows 8.1, and Windows 10.

---

## Chapter 2. Release 450 Driver Changes

This chapter describes open issues for version 452.06 WHQL, and resolved issues and driver enhancements for versions of the Release 450 driver up to version 452.06 WHQL

The chapter contains these sections:

- ▶ “Version 452.06 WHQL Highlights” on page 3
- ▶ “Changes and Fixed Issues in Version 452.06” on page 9
- ▶ “Open Issues in Version 452.06 WHQL” on page 10
- ▶ “Issues Not Caused by NVIDIA Drivers” on page 12

## Version 452.06 WHQL Highlights

This section provides highlights of version 452.06 WHQL of the NVIDIA Release 450 Driver for Windows 7, Windows 8, Windows 8.1, and Windows 10<sup>1</sup>.

- ▶ Requirement for Obtaining NVIDIA Drivers for Windows 7
- ▶ Existing Support
- ▶ Software Module Versions
- ▶ What's New in Version 452.06 WHQL
- ▶ What's New in Release 450
- ▶ Discontinued Support
- ▶ Limitations in This Release

## Requirement for Obtaining NVIDIA Drivers for Windows 7

Microsoft now provides only SHA-2 signed drivers. If your Windows 7 system is NOT equipped to detect SHA-2, you need to install the SHA-2 update support patches. For details as well as access to SHA-2 update support patches, see the Microsoft KBA "[2019 SHA-2 Code Signing Support requirement for Windows and WSUS](#)".

## Existing Support

This release supports the following APIs:

- ▶ Open Computing Language (OpenCL™ software) 1.2 for NVIDIA® Kepler™ and later GPUs
- ▶ OpenGL® 4.6
- ▶ Vulkan® 1.2
- ▶ DirectX 11
- ▶ DirectX 12 (Windows 10)

## Software Module Versions

- ▶ nView - 200.75
- ▶ HD Audio Driver - 1.3.38.34
- ▶ NVIDIA PhysX System Software - 9.19.0218

---

1. Includes support for Windows 10 May 2020 Update (Version 2004)

- ▶ GeForce Experience - 3.20.4.14
- ▶ CUDA - 11.0
- ▶ Standard NVIDIA Control Panel - 8.1.940.0
- ▶ DCH NVIDIA Control Panel - 8.1.958.0

## What's New in Version 452.06 WHQL

### GeForce Game Ready Driver

Game Ready Drivers provide the best possible gaming experience for all major new releases. Prior to a new title launching, our driver team is working up until the last minute to ensure every performance tweak and bug fix is included for the best gameplay on day-1.

### Game Ready for Microsoft Flight Simulator

This new Game Ready Driver provides the latest performance optimizations, profiles, and bug fixes for Microsoft Flight Simulator. In addition, this release also provides optimal support for the World of Warcraft: Shadowlands pre-patch on the public test realm as well as for A Total War Saga: TROY and Tony Hawk's Pro Skater 1 + 2.

[Learn more in our Game Ready Driver article.](#)

### New Features and Other Changes

- ▶ Adds support for new [G-SYNC compatible](#) monitors.  
Select the driver version under the Driver Needed column to display new monitors supported in that driver.
- ▶ See ["Changes and Fixed Issues in Version 452.06"](#) on page 9 and also ["What's New in Release 450"](#) on page 5.

# What's New in Release 450

## New Features and Other Changes

- ▶ Supports DirectX 12 Ultimate
- ▶ Supports Vulkan 1.2
- ▶ Supports hardware-accelerated GPU Scheduling.
- ▶ Supports CUDA 11.0.
- ▶ Added security updates for driver components.
  - Version 451.48 introduced security updates for driver components.

See the [NVIDIA Security Bulletin 5031](#) for details.

See also the section “[Driver Security](#)” on [page 15](#) for actions to take to mitigate vulnerabilities.

## Application Profiles

Added or updated the following SLI profiles:

- DCL - The Game (*NVIDIA Turing GPUs and later*)
- Jiu Xiao
- Monster Energy Supercross 2 - The Official Videogame (*NVIDIA Turing GPUs and later*)
- MORDHAU (*NVIDIA Turing GPUs and later*)
- Overpass (*NVIDIA Turing GPUs and later*)
- Planetside 2 (DirectX 11)
- Sniper Elite V2 Remastered
- Spyro Reignited Trilogy (*NVIDIA Turing GPUs and later*)
- Surviving The Aftermath
- System Shock (*NVIDIA Turing GPUs and later*)
- The Fisherman - Fishing Planet (*NVIDIA Turing GPUs and later*)
- Warhammer Underworlds: Online
- Wolcen: Lords of Mayhem

## Discontinued Support

### ► 3D Vision

Beginning with Release 430, the NVIDIA driver no longer supports the following 3D Vision technologies and features:

- NVIDIA 3D Stereoscopic Driver, including the 3D Vision driver and USB (emitter) driver
- NVAPI-based stereo APIs for Direct3D applications.

### ► NVIDIA Kepler GPUs for Notebooks

Beginning with Release 430, the NVIDIA driver no longer supports NVIDIA GPUs for notebooks based on the Kepler architecture.

### ► 32-bit Operating Systems

Beginning with Release 396, NVIDIA is no longer releasing Game Ready drivers for 32-bit operating systems for any GPU architecture.

## Limitations in This Release

The following features are not currently supported or have limited support in this driver release:

### Image Sharpening Feature

NVIDIA Control Panel Image sharpening controls, including GPU upscaling, are introduced in the R440 driver. Currently, the following limitations apply.

- ▶ Scaling is not supported on MSHybrid systems.
- ▶ HDR displays driven by pre-Turing GPUs will not support scaling
- ▶ Scaling will not work with VR
- ▶ Scaling will not work with displays using YUV420 format.
- ▶ Scaling uses aspect ratio scaling and will not use integer scaling
- ▶ Sharpening will not work with HDR displays
- ▶ GPU scaling engages when games are played only in full-screen mode, and not in windowed or borderless windowed mode.
- ▶ Some G-SYNC displays have a 6-tap/64-phase scaler which scales better than that offered by Turing's 5-tap/32-phase scaler.
- ▶ To avoid accidentally triggering scaling by applications or DWM, first change to the desired (< native) resolution from the NVIDIA Control Panel and then launch the application.
- ▶ Turing's 5-tap upscaler may not engage on certain monitors depending on the monitor's vblank timing.
- ▶ Turing's 5-tap upscaler may not engage if the input resolution is greater than 2560px in either the x or y dimension.
- ▶ Scaling is turned off automatically when switching display devices.
- ▶ "Restore Defaults" option in the control panel currently does not revert the upscaling resolution.

### Behavior Change in `NvEncCreateBitstreamBuffer` API of Video Codec SDK

In the NVIDIA driver, Release 415 and later, the behavior of the Video Codec SDK API (`NvEncCreateBitstreamBuffer`) has been changed to return `NV_ENC_ERR_UNIMPLEMENTED` instead of `NV_ENC_SUCCESS` when the encoder instance is configured to run in the motion estimation-only mode. As an indirect consequence of this change, the AppEncME sample application from the Video Codec SDK prior to SDK version 8.2.16 will crash due to a bug in the `NvEncoder` class.

The latest version of the SDK fixes this bug that affects the AppEncME sample application. NVIDIA recommends downloading the latest version from <https://developer.nvidia.com/nvidia-video-codec-sdk>.

## Connecting Displays to NVIDIA Turing GPUs in SLI Mode

To use SLI with NVIDIA Turing GPUs, all displays must be connected to the master GPU.

## Turing GPU Driver Installation on Windows 10

Drivers for Turing GPUs will not be installed on systems with Windows 10 RS2 or earlier. This includes Windows 10 Threshold 1, Threshold 2, Redstone 1, and Redstone 2 operating systems.

## Crescent Bay and OSVR Headsets on Multiple GPU Systems

With Release 367 and future NVIDIA drivers, Crescent Bay and Open Source Virtual Reality development kit headsets will not work with VRWorks Direct Mode in systems that contain GPUs from multiple vendors (for example, NVIDIA and Intel). For such systems, please disable the Intel integrated graphics (from the system BIOS) in order to use Direct Mode.

## Experimental OpenCL 2.0 Features

Select features in OpenCL 2.0 are available in the driver for evaluation purposes only. The following are the features as well as a description of known issues with these features in the driver:

### ► Device side enqueue

- The current implementation is limited to 64-bit platforms only.
- OpenCL 2.0 allows kernels to be enqueued with `global_work_size` larger than the compute capability of the NVIDIA GPU. The current implementation supports only combinations of `global_work_size` and `local_work_size` that are within the compute capability of the NVIDIA GPU.

The maximum supported CUDA grid and block size of NVIDIA GPUs is available at <http://docs.nvidia.com/cuda/cuda-c-programming-guide/index.html#compute-capabilities>. For a given grid dimension, the `global_work_size` can be determined by CUDA grid size x CUDA block size.

- For executing kernels (whether from the host or the device), OpenCL 2.0 supports non-uniform ND-ranges where `global_work_size` does not need to be divisible by the `local_work_size`. This capability is not yet supported in the NVIDIA driver, and therefore not supported for device side kernel enqueues.

### ► Shared virtual memory

- The current implementation of shared virtual memory is limited to 64-bit platforms only.

## Changes and Fixed Issues in Version 452.06

The following sections list the important changes and the most common issues resolved in this version. This list is only a subset of the total number of changes made in this driver version. The NVIDIA bug number is provided for reference.

### Fixed Issues in this Release

- ▶ [Shadow of the Tomb Raider][DirectX 12]: The game may crash when launched if Hardware-accelerated GPU scheduling is enabled. [3037544]
- ▶ [Death Stranding]: Texture corruption may be observed during gameplay on GeForce GTX 16/RTX 20 series GPUs. [200631405]
- ▶ [Path of Exile]: Black square corruption appears around characters.[3038439]
- ▶ [Sonic & All Stars Racing Transformed]: The game crashes when playing in a water level. [3028931]
- ▶ [Forza Motorsport 7]: The game starts to stutter after racing a few laps. [3035005]
- ▶ [Zhan Ge Jing Ji Chang]: Corruption occurs in the game when played in the Tencent mobile game simulator. [200631684]
- ▶ Several games randomly freeze for a few seconds during gameplay. Affected games include Assassin's Creed Origins, Planetside 2, Assassin's Creed III, Assassin's Creed Odyssey, and Assassin's Creed Syndicate. [3038632]
- ▶ The NVIDIA Control Panel does not display the native resolution of some HDTVs if the timings are invalid. [3060459]
- ▶ Some displays may show a green tint when Windows Night Light is enabled. [3038686]
- ▶ Snow appears on the display upon waking up the HDMI monitor. [3039265]
- ▶ [Notebook][Turing] Display may show pixelated corruption on waking notebook from long display off [200633139]

## Open Issues in Version 452.06 WHQL

As with every released driver, version 452.06 WHQL of the Release 450 driver has open issues and enhancement requests associated with it. This section includes lists of issues that are either not fixed or not implemented in this version. Some problems listed may not have been thoroughly investigated and, in fact, may not be NVIDIA issues. Others may have workaround solutions.



**Note:** You may encounter issues installing the NVIDIA Control Panel from the Windows Store. See [“Issues Installing the NVIDIA Control Panel from the Windows Store” on page 21](#) for more information.

*For notebook computers, issues can be system-specific and may not be seen on your particular notebook.*

### Windows 7 Issues

- ▶ [Notebook][H-Clone]: With the integrated graphics processor as the clone source, display settings cannot be changed from the NVIDIA Control Panel. [200594188]

### Windows 10 Issues

- ▶ [SLI][Red Dead Redemption 2]: With SLI enabled, the game may crash with ERR\_GFX\_STATE error pointing to nvlddmkm.sys after pressing [Alt]+[Tab]. [3083589]
- ▶ [SLI][G-SYNC][Red Dead Redemption 2 Vulkan]: With SLI + G-SYNC enabled, the games display corruption and a blank screen. [200645671]
- ▶ [SLI][World of Warcraft Shadowlands]: Character images may flicker when SLI is enabled. [200647193]
- ▶ [World of Warcraft Shadowlands]: When run at frame rates greater than 60 FPS with high display settings, moving characters display minute twitching/stuttering. [200647563]
- ▶ [Sunset Overdrive]: The game may display random green corruption if Depth of Field is enabled from in-game settings. [2750770]
- ▶ [VR]: HDCP errors occur with Valve Index VR. [2967616]
- ▶ [Call of Duty - Warzone]: Freestyle does not work. [200593020]
- ▶ [Call of Duty: Modern Warfare]: Game may randomly show large frame rate drop with ray tracing enabled [3050468]
- ▶ [Forza Motorsport 7]: The curb may display a black strip during a race on certain tracks. [2781776]
- ▶ [Fortnite]: Blue-screen crash occurs pointing to nvlddmkm.sys when playing the game at 4K resolution. [200645328]

*To work around, set the resolution to lower than 4k.*

- ▶ [Zombie Army: Dead War 4][Ansel/Freestyle]: The Ansel & Freestyle tabs are unselectable. [2810884]

*You may encounter issues installing the NVIDIA Control Panel from the Windows Store. See [“Issues Installing the NVIDIA Control Panel from the Windows Store” on page 21](#) for more information.*

- ▶ Video playback on the secondary display lags/freezes while playing a game on the primary display if Hardware-accelerated GPU Scheduling is enabled [200586262]
- ▶ [Notebook][H-Clone]: With the integrated graphics processor as the clone source, display settings cannot be changed from the NVIDIA Control Panel. [200594188]
- ▶ [Notebook]: Some Pascal-based notebooks w/ high refresh rate displays may randomly drop to 60Hz during gameplay. [3009452]

# Issues Not Caused by NVIDIA Drivers

This section lists issues that are not due to the NVIDIA driver as well as features that are not meant to be supported by the NVIDIA driver.

- ▶ “Windows 10 Considerations” on page 12
- ▶ “Windows 7 Considerations” on page 12
- ▶ “Operating System Issues” on page 13
- ▶ “Application Issues” on page 13

## Windows 10 Considerations

### Cross-adapter Clone Mode

Under Windows 10, clone mode across graphics processors is handled by the Windows OS, and not by the NVIDIA driver. Consequently, there are no controls for cross-adapter clone mode in the NVIDIA Control Panel under Windows 10.

Functionality of some display controls in the NVIDIA Control Panel may be affected if cross-adapter clone mode is enabled through the Windows Control Panel. In this case, use the Windows Control Panel to adjust display settings.

### Optimus Systems

Because cross-adapter clone mode is handled by the Windows 10 OS, there are no display controls in the NVIDIA Control Panel if no display is connected to the NVIDIA GPU on Optimus notebooks.

## Windows 7 Considerations

### Hotplug Action

Under Windows 7, the default settings are not applied when a new display is hotplugged, and there is no message balloon alert stating that a new display was detected. All display connection and detection events are handled through the Windows 7 Connecting and Configuring Displays (CCD) mechanism.

## NVIDIA Control Panel Rotate Display Page

The rotation radio button labels are consistent with the Microsoft panel

**Table 2.1** NVIDIA Control Panel Rotation Page Radio Buttons

Clockwise Rotation	Windows 7 Label
0 degrees	Landscape
90 degrees	Portrait

**Table 2.1** NVIDIA Control Panel Rotation Page Radio Buttons

Clockwise Rotation	Windows 7 Label
180 degrees	Landscape (flipped)
270 degrees	Portrait (flipped)

## Limitation

- ▶ When switching the refresh rate from 59 Hz to 60Hz, the refresh rate remains at 59 Hz.  
See the Microsoft KB article KB2006076 at <http://support.microsoft.com/kb/2006076>.

## Operating System Issues

- ▶ [Windows 10 Fall Creators Update][HDTV]: 12 bpc is automatically applied even on HDTVs that support only 8 bpc, resulting in a scrambled display. [2007663]  
*To work around, open the NVIDIA Control Panel->Change Resolution page, select "Use NVIDIA color settings", then set the Output color depth to 8 bpc.*
- ▶ When upgrading from Windows 7 to Windows 8, the system fails to retrieve the installed WHQL display driver. [1024416]  
See the Microsoft KB article KB2743349 <http://support.microsoft.com/kb/2743349>.

## Application Issues

### Fixed Frame Rate Games

Some games and applications are designed to run at a fixed frame rate, and consequently do not take advantage of NVIDIA G-Sync. To prevent issues, G-Sync may be disabled for those applications.

---

# Chapter 3. The Release 450 Driver

This chapter covers the following main topics:

- ▶ “About the Release 450 Driver” on page 14
- ▶ “Driver Security” on page 15
- ▶ “Advanced Driver Information” on page 16
- ▶ “Known Product Limitations” on page 20
- ▶ “Hardware and Software Support” on page 29
- ▶ “Driver Installation” on page 34

## About the Release 450 Driver

This driver release is from the Release 450 family of drivers (versions 450.xx to 454.xx). See “Supported NVIDIA Desktop Products” on page 29 and “Supported NVIDIA Notebook Products” on page 31 for current products supported in this release.

As part of the NVIDIA Notebook Driver Program, this is a reference driver that can be installed on supported NVIDIA notebook GPUs. However, please note that your notebook original equipment manufacturer (OEM) provides certified drivers for your specific notebook on their website. NVIDIA recommends that you check with your notebook OEM about recommended software updates for your notebook. OEMs may not provide technical support for issues that arise from the use of this driver.

# Driver Security

Follow these safe computing practices:

- ▶ Only download or execute content and programs from trusted third parties.
- ▶ Run your system and programs with the least privilege necessary. Users should run without administrator rights whenever possible.
- ▶ When running as administrator, do not elevate UAC privileges for activities or programs that don't need them.

This section describes additional actions to take to mitigate specific known security issues.

## Restricting/Enabling Access to GPU Performance Counters

The NVIDIA graphics driver contains a vulnerability (CVE-2018-6260) that may allow access to application data processed on the GPU through a side channel exposed by the GPU performance counters. GPU performance counters are needed by developers in order to use NVIDIA developer tools such as CUPTI, Nsight Graphics, and Nsight Compute. In order to address CVE-2018-6260 the driver (starting with version 419.67) automatically disables access for non-admin users.

For more information about CVE-2018-6260 visit the [NVIDIA Security Bulletin 4772](#).

Access to GPU performance counters can be enabled for non-admin users who need to use NVIDIA developer tools. Enabling access to GPU performance counters can be accomplished through the NVIDIA Control Panel->*Developer*->*Manage GPU Performance Counters* page. Refer to the *Developer*->*Manage GPU Performance Counters* section of the NVIDIA Control Panel Help for instructions.

# Advanced Driver Information

This section contains the following additional information about the driver:

- ▶ [Updating the NVIDIA VirtualLink PPC Firmware](#)
- ▶ [Differing GPU Voltages in SLI Mode](#)
- ▶ [3D Compatibility Mode](#)
- ▶ [Help for Resizing Your HDTV Desktop](#)
- ▶ [Understanding the NVIDIA System Information Window>DirectX Information](#)

## Updating the NVIDIA VirtualLink PPC Firmware

You can update the NVIDIA VirtualLink PPC firmware from the NVIDIA Control Panel by clicking Update from the top menu and then selecting Update VirtualLink firmware.

The following is a description of the changes made in the latest version.

### Version 3.2.8 (Notebook)

The following are the changes and fixed issues in the NVIDIA VirtualLink PPC firmware version 3.2.8.

- ▶ [USBC Notebook] [VirtualLink]: Some USB bus-powered type-C monitors won't light up until Windows boots. [2524391]
- ▶ [USBC Notebook] [VirtualLink] Some USB Type-C to HDMI dongles may not work. [200474652]
- ▶ [USBC Notebook] [VirtualLink] USB-C SuperSpeed does not work with Type-C hub which supports multiple (DisplayPort and USB) Alternate Modes. [200482972]

## Differing GPU Voltages in SLI Mode

When non-identical GPUs are used in SLI mode, they may run at different voltages. This occurs because the GPU clocks are kept as close as possible, and the clock of the higher performance GPU is limited by that of the other. One benefit is that the higher performance GPU saves power by running at slightly reduced voltages.

An end-user gains nothing by attempting to raise the voltage of the higher performance GPU because its clocks must not exceed those of the other GPU.

## 3D Compatibility Mode

3D Compatibility Mode is an NVIDIA proprietary rendering mode for 3D Vision that improves the 3D experience for many key DirectX 10 and 11 games. NVIDIA continues to add game support with new driver versions.

## Requirements and Compatibility

- Games must be run in DirectX 10 or DirectX 11 mode.
- Not compatible with 3D Vision Surround.

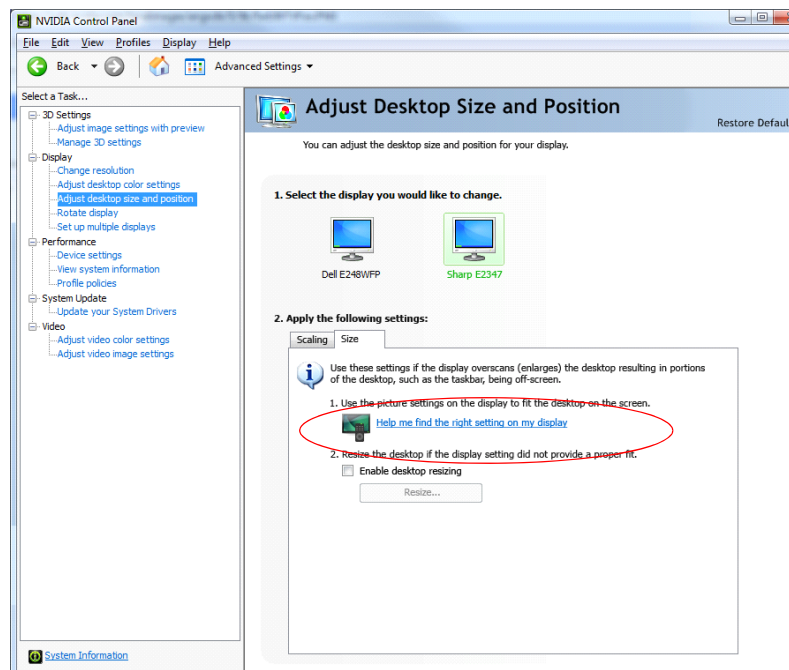
## Switching Compatibility Modes

Games with 3D Compatibility Mode will launch in this mode by default. You can switch between 3D Compatibility mode and standard 3D Vision mode as follows:

- 1 Before starting the game, enable Advanced In-game Settings in the NVIDIA Control Panel:
  - a Open the NVIDIA Control Panel and navigate to the *Stereoscopic 3D*->*Set up stereoscopic 3D* page and click Set Keyboard Shortcuts.
  - b. Click the *Show advanced in-game settings* arrow if the section is not expanded, then select Enable advanced in-game settings.
  - c. Click OK.
2. Press Ctrl+Alt+F11 during the game to toggle between 3D Compatibility mode and standard 3D Vision mode.

## Help for Resizing Your HDTV Desktop

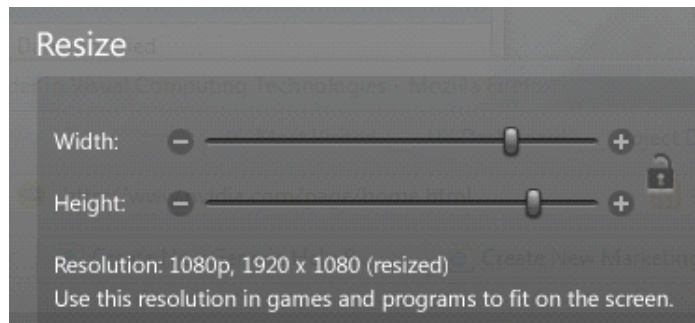
The best way to resize the screen in order to view the entire content is to use the controls provided by the display hardware. Click the link on the Size tab to view a guide to changing the settings on your display hardware.



The resize controls on the NVIDIA Control Panel are provided in case satisfactory results cannot be achieved using the controls on the display.

After resizing the HDTV desktop using the NVIDIA Control Panel Resize controls, the new custom resolution created is now added to the list of available resolutions for that display, and also added to the resolution list within the game or application.

The method for resizing the HDTV desktop was improved to provide better image quality when applying underscan. This method results in a new custom resolution being created which needs to be selected from games or applications to apply the resizing. In the example displayed in the following screen shot, the underscan has created a new resolution (1216 × 682). Although this resolution looks different, it is still in HD format. Remember to select this resolution in your game or other application in order to take advantage of it.



**Note:** Some games or applications may not support the new resolution.

## Understanding the NVIDIA System Information Window>DirectX Information

The System Information window—accessed by clicking System Information at the bottom left corner of the NVIDIA Control Panel—provides technical information about the NVIDIA graphics cards and driver installed in the system.

It also provides the following system information:

- Operating system: For example, “Windows 7 Enterprise, 64-bit”
- DirectX runtime version: For example, “11.0”

*In order to use the version of DirectX reported in the System Information window, the NVIDIA GPU and graphics driver must also support that DirectX version.*

This information is provided in the *Graphics card information* section of the System Information window as follows:

- DirectX support

(Provided in previous driver versions)

This is the DirectX version that is supported by the NVIDIA graphics hardware and driver.

► Direct3D API version

(Provided in later driver versions, for Windows 7 and later.)

This is the Direct3D version that is supported by the NVIDIA graphics hardware and driver. The API version is expressed in terms of Direct3D – the graphics subsystem component of DirectX.

► Direct3D feature level

(Provided in later driver versions, for Windows 7 and later)

Direct3D feature levels describe a subset of features within the Direct3D API version that are supported by the NVIDIA graphics hardware and driver.

# Known Product Limitations

This section describes problems that will not be fixed. Usually, the source of the problem is beyond the control of NVIDIA. Following is the list of problems and where they are discussed in this document:

- ▶ “Issues Installing the NVIDIA Control Panel from the Windows Store” on page 21
- ▶ “Windowed NVIDIA G-SYNC is Disabled for Multi-monitor System Video Playback” on page 21
- ▶ “GPU Temperature Reported Incorrectly on Optimus Systems” on page 22
- ▶ “Damaged or Missing WMI Service Prevents NVIDIA Driver Installation” on page 22
- ▶ “Screen Turns Black During Clean Driver Overinstall on Windows 8.1 Optimus Notebook” on page 23
- ▶ “Total Available Graphics Memory Reported Incorrectly” on page 23
- ▶ “Increasing 4-way SLI/Multi-GPU Performance” on page 24
- ▶ “No PhysX Acceleration Using the GPU” on page 24
- ▶ “NVIDIA PhysX Software Cannot Be Installed/Uninstalled in Windows Safe Mode” on page 25
- ▶ “Do Not Use Windows Rollback for Graphics Drivers” on page 25
- ▶ “Uninstalling Drivers Using Device Manager is Not Supported” on page 25
- ▶ “Changing Primary Display Across SLI GPUs Slower Than Expected” on page 26
- ▶ “Using HDMI Audio with Displays That Have a High Native Resolution” on page 26
- ▶ “Using HDMI/DisplayPort Audio in Dualview or Clone Mode” on page 27
- ▶ “Flat Panel Scaling Controls Not Functional for Some TV Modes and Displays” on page 27
- ▶ “GPU Runs at a High Performance Level in Multi-display Modes” on page 28
- ▶ “1280 × 1024 @ 60 Hz Not Available on BenQ FP241W Monitors” on page 28

## Issues Installing the NVIDIA Control Panel from the Windows Store

You may encounter issues when attempting to install the NVIDIA Control Panel from the Windows Store under Windows 10, such as

- ▶ The download process from the Windows Store freezes at the “Starting download ...” stage.
- ▶ The NVIDIA Control Panel fails to download after initiating the download from the notification popup that appears upon installing the driver.

For assistance with installing the NVIDIA Control Panel from the Microsoft Windows Store, see the NVIDIA Knowledge Base Article, [NVIDIA Control Panel Windows Store App](#).

For information about the DCH vs Standard drivers for Windows 10, see the NVIDIA Knowledge Base Article, [NVIDIA DCH/Standard Display Drivers for Windows 10 FAQ](#).

## Windowed NVIDIA G-SYNC is Disabled for Multi-monitor System Video Playback

### Issue

Beginning with Windows 10 April 2018 Update (RS4), NVIDIA G-SYNC is disabled during active video playback on multi-monitor systems.

### Explanation

If hardware accelerated video is playing on one display and an application is launched on another display in windowed mode with NVIDIA G-SYNC or adaptive-sync enabled, the video stutters. This is the result of desktop compositing on displays with differing refresh rates.

To prevent the video stutter in this scenario, the driver disables NVIDIA G-SYNC during active video playback, but re-enables G-SYNC if the video is paused or closed.



**Note:** The issue can also occur when displays are set to different refresh rates, even when G-SYNC is not used. To resolve in this case, make sure all displays are set to the same refresh rate.

## GPU Temperature Reported Incorrectly on Optimus Systems

### Issue

On Optimus systems, temperature-reporting tools such as Speccy or GPU-Z report that the NVIDIA GPU temperature is zero when no applications are running.

### Explanation

On Optimus systems, when the NVIDIA GPU is not being used then it is put into a low- power state. This causes temperature-reporting tools to return incorrect values.

Waking up the GPU to query the temperature would result in meaningless measurements because the GPU temperature change as a result.

These tools will report accurate temperatures only when the GPU is awake and running.

## Damaged or Missing WMI Service Prevents NVIDIA Driver Installation

### Issue

“Install failed” or “Install Failed, could not find compatible graphics hardware” message may appear during installation, even if the system has a compatible graphics card. This can occur when installing the NVIDIA driver or GeForce Experience software.

### Cause

This issue could be the result of a corrupt WMI service on your system. The NVIDIA Installer requires the WMI service to properly install the driver or other NVIDIA software.

### Resolution

You must repair the WMI service on your system in order to successfully install NVIDIA drivers. A future driver release will alert the user during installation that there is a problem with the WMI service on the system.

# Screen Turns Black During Clean Driver Overinstall on Windows 8.1 Optimus Notebook

## Issue

After installing a Release 325 driver earlier than version 326.09 on an Optimus notebook running Windows 8.1, a subsequent clean overinstall of a later driver results in a black screen. The screen turns black when the driver uninstalls the older driver.

Typically, you may encounter this when attempting to upgrade the NVIDIA driver after installing Windows 8.1. While installing Windows 8.1, Windows Update installs NVIDIA driver version 326.01, then during the clean overinstall the black screen occurs as the older driver is uninstalled.

## Workaround - Prevention

To avoid the issue during the initial installation of Windows 8.1, do not reboot the system after Windows Update installs the NVIDIA driver. Then perform the custom clean overinstall of the newer driver.

## Resolution

This issue does not occur after installing an NVIDIA driver version 326.09 or later for Windows 8.1. When driver version 326.09 or later is installed, performing a clean overinstall with a newer driver will not result in a black screen.

# Total Available Graphics Memory Reported Incorrectly

## Background—TAG Memory

In the Windows Display Driver Model (WDDM), Total Available Graphics (TAG) memory is reported as the sum of

- Dedicated Video Memory (video memory dedicated for graphics use)
- Dedicated System Memory (system memory dedicated for graphics use), and
- Shared System Memory (system memory shared between the graphics subsystem and the CPU).

The values for each of these components are computed according to WDDM guidelines when the NVIDIA Display Driver is loaded.

## Issue

Some TAG-reporting APIs represent video memory using 32-bits instead of 64-bits, and consequently do not properly report available graphics memory when the TAG would otherwise exceed 4 gigabytes (GB). This results in under reporting of available memory and potentially undesirable behavior of applications that rely on these APIs to report available memory.

The under reporting can be extreme. For example, 6 GB might be reported as 454 MB, and 8 GB might be reported as 1259 MB.

## Driver Action for GeForce-based Graphics Systems

On graphics systems with less than 2.75 GB of advertized physical memory, the NVIDIA display driver typically limits the Shared System Memory to maintain a TAG memory value of less than 4 GB<sup>1</sup>.

- ▶ This results in reliable reporting of sub-4 GB TAG memory on systems with less than 2.75 GB of advertised physical memory.
- ▶ On systems with 2.75 GB or more of advertized physical memory, you may see different reported TAG memory values between the NVIDIA Control Panel and other reporting APIs.

## Increasing 4-way SLI/Multi-GPU Performance

### Issue

With some games and applications, you may experience little to no performance gain or even a performance drop with 4-way SLI or multi-GPU configurations.

### Resolution

1. Open the NVIDIA Control Panel, then click Manage 3D Settings from the navigation pane.
2. Click the *Global Settings* tab, then scroll to the *Power management mode* feature, click the corresponding list arrow and select Prefer maximum performance, then click Apply.

## No PhysX Acceleration Using the GPU

If after installing the PhysX System Software you find that there is no PhysX acceleration on supported applications, repeat the PhysX setup as follows:

1. Reboot the PC.
2. Open the NVIDIA Control Panel and then, under 3D Settings, click Set PhysX configuration to open that page.
3. Under Select a PhysX processor, verify that either auto-select or a specific NVIDIA GPU is selected.
4. Click Apply.

---

1. The WDDM guidelines dictate minimum and maximum values for the components, but the display driver may further constrain the values that are reported (within the allowed minimum and maximum).

## NVIDIA PhysX Software Cannot Be Installed/Uninstalled in Windows Safe Mode

### Issue

The NVIDIA PhysX System Software is not included in the NVIDIA driver installation/uninstallation under safe mode.

### Explanation

The NVIDIA PhysX System Software installer is not compatible with Microsoft's policy for Windows Safe Mode. Consequently, installation or uninstallation of the PhysX System Software under safe mode would fail. To allow installation or uninstallation of the graphics driver under safe mode, the NVIDIA PhysX System Software is blocked from the process.

## Do Not Use Windows Rollback for Graphics Drivers

To reinstall a previous or older NVIDIA graphics driver, do not use the Windows rollback feature. This method will not reliably restore all the previous driver files.

Instead, use the Windows Add and Remove programs to remove the current driver, and then install the older driver using setup.exe.

## Uninstalling Drivers Using Device Manager is Not Supported

### Issue

On all supported versions of Microsoft Windows, uninstalling the NVIDIA driver using the Windows Device Manager may not remove associated files or applications.

### Explanation

Microsoft has confirmed that this behavior is by design. If you wish to uninstall the NVIDIA driver, it is recommended that you do so using Add and Remove programs.

See the [Microsoft KB article 2278714](#).

## Changing Primary Display Across SLI GPUs Slower Than Expected

### Issue

On an SLI system, switching the primary (or SLI focus) display when each display in the SLI group is connected to a different GPU takes longer than expected.

### Explanation

On an SLI system with each SLI GPU driving a display, the display connected to the slave GPU is the primary display (also the SLI focus display). In order to switch the primary display to the one connected to the other GPU, the master and slave GPU configuration must also switch. In order to reassign which GPU is the master and which is the slave, the driver must be reloaded. It is the process of reloading the driver that takes the additional time.

## Using HDMI Audio with Displays That Have a High Native Resolution

*To use HDMI audio with some displays that have a native resolution higher than  $1920 \times 1080$ , you must set the display to a lower HD resolution.*

Some HDMI displays have a native resolution that exceeds the maximum supported HD mode. For example, displays with a native resolution of  $1920 \times 1200$  exceed the maximum supported HD mode of  $1920 \times 1080$ .

Applying this native mode results in display overscan which cannot be resized using the NVIDIA Control Panel since the mode is not an HD mode.

To avoid this situation and provide a better user experience, the driver treats certain TVs—such as the Viewsonic VX2835wm and the Westinghouse LVM-37w3—as a DVI monitor when applying the native mode. Because the driver does not treat the TV as an HDMI in this case, the HDMI audio is not used.

## Using HDMI/DisplayPort Audio in Dualview or Clone Mode

### Two Audio-enabled Ports

In a multi-display configuration where both HDMI/DisplayPort audio ports are enabled, only the primary display will provide the audio.

### One Audio-enabled Port

In a multi-display configuration where only one audio port is enabled, such as when one display is a DVI display, then the HDMI/DisplayPort display can provide the audio whether is it the primary or secondary display.

## Flat Panel Scaling Controls Not Functional for Some TV Modes and Displays

The NVIDIA Control Panel flat panel scaling controls on the “Adjust Size & Position” page are not intended to be used for TV modes, and normally the controls are not available for TV or HDTV displays.

However, Microsoft requires that certain TV/HDTV modes be available for all digital displays, including DVI and HDMI, even if they are not HDTV.

While the NVIDIA flat panel scaling controls are available for those displays, they will not be functional for the TV modes that appear in compliance with the Microsoft requirements. The affected modes are as follows:

- ▶ 1920 × 1080i @ 50/59.94/60 Hz
- ▶ 1280 × 720p @ 50/59.94/60 Hz
- ▶ 720 × 480p @ 59.94/60 Hz
- ▶ 720 × 576p @ 50 Hz

## GPU Runs at a High Performance Level in Multi-display Modes

This is a hardware limitation with desktop and older notebook GPUs, and not a software bug. When multiple displays are connected and active, the GPU will always operate with full clock speeds in order to efficiently drive multiple displays—even when no 3D programs are running.



**Note:** NVIDIA notebook GeForce 5xxM series and later GPUs do not have this limitation. For those GPUs the driver can adjust the performance level, depending on demand, even when driving multiple displays.

## 1280 × 1024 @ 60 Hz Not Available on BenQ FP241W Monitors

Even though the monitor EDID lists 1280 × 1024 @ 60 Hz, the screen turns blank when using an HDMI connection. This is an issue with the monitor and not the NVIDIA driver.

Because of this issue with the monitor, the NVIDIA driver blocks the problem mode (1280 × 1024 @ 60 Hz) and makes it unavailable.

# Hardware and Software Support

- ▶ “Supported Operating Systems” on page 29
- ▶ “Support for OpenCL 1.2” on page 29
- ▶ “Supported NVIDIA Desktop Products” on page 29
- ▶ “Supported NVIDIA Notebook Products” on page 31
- ▶ “Supported Languages” on page 32

## Supported Operating Systems

This Release 450 driver includes drivers designed for the following Microsoft® operating systems:

- ▶ Microsoft Windows® 10<sup>1</sup>, 64-bit
- ▶ Microsoft Windows® 8.1, 64-bit
- ▶ Microsoft Windows® 8, 64-bit
- ▶ Microsoft Windows® 7, 64-bit versions.

## Support for OpenCL 1.2

Kepler, Maxwell, Pascal, and Volta GPUs are supported.

## Supported NVIDIA Desktop Products

The following table (from <http://www.geforce.com/hardware>) lists current NVIDIA desktop products supported by version 452.06 WHQL of the Release 450 driver. For information about desktop products not shown, please see <http://www.geforce.com/hardware/desktop-gpus>.

**Table 3.1 Supported NVIDIA Desktop GPUs**

Consumer Products	Architecture
NVIDIA TITAN RTX	Turing
NVIDIA GeForce RTX 2080 SUPER	Turing
NVIDIA GeForce RTX 2070 SUPER	Turing
NVIDIA GeForce RTX 2060 SUPER	Turing
NVIDIA GeForce RTX 2080 Ti	Turing
NVIDIA GeForce RTX 2080	Turing
NVIDIA GeForce RTX 2070	Turing
NVIDIA GeForce RTX 2060	Turing

---

1. Includes support for Windows 10 May 2019 Update (Version 1903) (19H1)

Table 3.1 Supported NVIDIA Desktop GPUs

Consumer Products	Architecture
NVIDIA TITAN V	Volta
NVIDIA TITAN Xp	Pascal
NVIDIA TITAN X	Pascal
GeForce GTX 1660 SUPER	Turing
GeForce GTX 1660 Ti	Turing
GeForce GTX 1660	Turing
GeForce GTX 1650 SUPER	Turing
GeForce GTX 1650	Turing
GeForce GTX 1080 Ti	Pascal
GeForce GTX 1080	Pascal
GeForce GTX 1070 Ti	Pascal
GeForce GTX 1070	Pascal
GeForce GTX 1060 6GB	Pascal
GeForce GTX 1060 3GB	Pascal
GeForce GTX 1060	Pascal
GeForce GTX 1050 Ti	Pascal
GeForce GTX 1050 3GB	Pascal
GeForce GTX 1050	Pascal
GeForce GT 1030	Pascal
GeForce GTX TITAN X	Maxwell
GeForce GTX TITAN Z	Kepler
GeForce GTX TITAN Black	Kepler
GeForce GTX TITAN	Kepler
GeForce GTX 980 Ti	Maxwell
GeForce GTX 980	Maxwell
GeForce GTX 970	Maxwell
GeForce GTX 960	Maxwell
GeForce GTX 950	Maxwell
GeForce GTX 780 Ti	Kepler
GeForce GTX 780	Kepler
GeForce GTX 770	Kepler
GeForce GTX 760	Kepler
GeForce GTX 760 Ti (OEM)	Kepler
GeForce GTX 750 Ti	Maxwell
GeForce GTX 750	Maxwell

Table 3.1 Supported NVIDIA Desktop GPUs

Consumer Products	Architecture
GeForce GTX 745	Maxwell
GeForce GT 740	Kepler
GeForce GT 730	Kepler
GeForce GT 720	Kepler
GeForce GT 710	Kepler
GeForce GTX 690	Kepler
GeForce GTX 680	Kepler
GeForce GTX 670	Kepler
GeForce GTX 660 Ti	Kepler
GeForce GTX 660	Kepler
GeForce GTX 650 Ti BOOST	Kepler
GeForce GTX 650 Ti	Kepler
GeForce GTX 650	Kepler
GeForce GTX 645	Kepler
GeForce GT 645	Kepler
GeForce GT 640	Kepler
GeForce GT 635	Kepler
GeForce GT 630	Kepler

## Supported NVIDIA Notebook Products

The following table lists current NVIDIA notebook products supported by version 452.06 WHQL of the Release 450 driver. For information about notebook products not shown, please see <http://www.geforce.com/hardware/notebook-gpus>.

Table 3.2 Supported NVIDIA Notebook GPUs

Consumer Products	Architecture
GeForce RTX 2080	Turing
GeForce RTX 2070	Turing
GeForce RTX 2060	Turing
GeForce GTX 1660 Ti	Turing
GeForce GTX 1650	Turing
GeForce MX350	Pascal
GeForce MX330	Pascal
GeForce MX250	Pascal
GeForce MX230	Pascal

Table 3.2 Supported NVIDIA Notebook GPUs (continued)

Consumer Products	Architecture
GeForce MX150	Pascal
GeForce MX130	Maxwell
GeForce MX110	Maxwell
GeForce GTX 1080 for notebooks	Pascal
GeForce GTX 1070 for notebooks	Pascal
GeForce GTX 1060 for notebooks	Pascal
GeForce GTX 1050 for notebooks	Pascal
GeForce GTX 1050 Ti for notebooks	Pascal
GeForce GTX 980 for notebooks	Maxwell
GeForce GTX 980M	Maxwell
GeForce GTX 970M	Maxwell
GeForce GTX 965M	Maxwell
GeForce GTX 960M	Maxwell
GeForce GTX 950M	Maxwell
GeForce 945M	Maxwell
GeForce 940MX	Maxwell
GeForce 940M	Maxwell
GeForce 930MX	Maxwell
GeForce 930M	Maxwell
GeForce 920MX	Maxwell
GeForce GTX 860M	Maxwell
GeForce GTX 850M	Maxwell
GeForce 840M	Maxwell
GeForce 830M	Maxwell

## Supported Languages

The Release 450 Graphics Drivers supports the following languages in the main driver Control Panel:

English (USA)	German	Portuguese (Euro/Iberian)
English (UK)	Greek	Russian
Arabic	Hebrew	Slovak
Chinese (Simplified)	Hungarian	Slovenian
Chinese (Traditional)	Italian	Spanish

Czech	Japanese	Spanish (Latin America)
Danish	Korean	Swedish
Dutch	Norwegian	Thai
Finnish	Polish	Turkish
French	Portuguese (Brazil)	

# Driver Installation

## Minimum Hard Disk Space

The hard disk space requirement is approximately 1.5x the size of the installation download to accommodate extracted and temporary files.

## Before You Begin

### nTune

If you have previously installed NVIDIA nTune, NVIDIA recommends that you uninstall nTune before installing this driver. After the driver install is complete, you can reinstall NVIDIA nTune.

### Notebooks

- ▶ Check to make sure that your notebook has a supported GPU (see [“Supported NVIDIA Notebook Products”](#) on page 31).
- ▶ It is recommended that you back up your current system configuration.
- ▶ If you own a Dell Inspiron 1420, Dell XPS M1330, Dell XPS M1530, or Dell Latitude D630 or D630c, it is highly recommended that you first install this [Dell software update](#).

## Installation Instructions



**Obtaining NVIDIA Drivers:** Microsoft now provides only SHA-2 signed drivers. If your Windows 7 system is NOT equipped to detect SHA-2, you need to install the SHA-2 update support patches. For details as well as access to SHA-2 update support patches, see the Microsoft KBA [“2019 SHA-2 Code Signing Support requirement for Windows and WSUS”](#).

- 1 Follow the instructions on the NVIDIA.com Web site driver download page to locate the appropriate driver to download, based on your hardware and operating system.
- 2 From the driver download page, click the Download button.  
The *Download Confirmation* page appears.
- 3 If you agree to the “License For Customer Use of NVIDIA Software”, click the Agree & Download button to begin the download.  
The *File Download* dialog appears.
- 4 Either click Save to save the file and then run it from your PC, or click Run.  
An extraction path dialog appears prompting you to specify where on your PC you want the driver files to be installed.

5. Click OK to use the default location, or click the folder icon and specify an alternate location to install the driver files.

The files are extracted and then the NVIDIA Installer is launched automatically.

6. At the *License Agreement* page of the Installer, click Agree and Continue.
7. Follow the instructions in the NVIDIA Installer to complete the installation.



**Note:** The driver presents game screenshots while the driver is installing. If you are not connected to the internet during the installation, you may see a “Navigation to the webpage was cancelled” message instead. The message can be ignored and does not affect the installation. The message won’t appear if the browser cache is cleared.



**Note:** The NVIDIA PhysX System Software will not be included in the installation if the same version or a later version is already installed.



**Note:** After the driver installation, Windows 7 may default to 16-bpp color and disable the Desktop Window Manager (DWM). To work around this issue, set the color to 32-bpp and then reboot the PC.

See also the installation/uninstallation considerations explained in [“Known Product Limitations” on page 20](#).

## Notice

ALL NVIDIA DESIGN SPECIFICATIONS, REFERENCE BOARDS, FILES, DRAWINGS, DIAGNOSTICS, LISTS, AND OTHER DOCUMENTS (TOGETHER AND SEPARATELY, "MATERIALS") ARE BEING PROVIDED "AS IS." NVIDIA MAKES NO WARRANTIES, EXPRESSED, IMPLIED, STATUTORY, OR OTHERWISE WITH RESPECT TO THE MATERIALS, AND EXPRESSLY DISCLAIMS ALL IMPLIED WARRANTIES OF NON-INFRINGEMENT, MERCHANTABILITY, AND FITNESS FOR A PARTICULAR PURPOSE.

Information furnished is believed to be accurate and reliable. However, NVIDIA Corporation assumes no responsibility for the consequences of use of such information or for any infringement of patents or other rights of third parties that may result from its use. No license is granted by implication of otherwise under any patent rights of NVIDIA Corporation. Specifications mentioned in this publication are subject to change without notice. This publication supersedes and replaces all other information previously supplied. NVIDIA Corporation products are not authorized as critical components in life support devices or systems without express written approval of NVIDIA Corporation.

## Macrovision Compliance Statement

NVIDIA Products that are Macrovision enabled can only be sold or distributed to buyers with a valid and existing authorization from Macrovision to purchase and incorporate the device into buyer's products.

Macrovision copy protection technology is protected by U.S. patent numbers 5,583,936; 6,516,132; 6,836,549; and 7,050,698 and other intellectual property rights. The use of Macrovision's copy protection technology in the device must be authorized by Macrovision and is intended for home and other limited pay-per-view uses only, unless otherwise authorized in writing by Macrovision. Reverse engineering or disassembly is prohibited.

## Third Party Notice

Portions of the NVIDIA system software contain components licensed from third parties under the following terms:

Clang & LLVM:

Copyright (c) 2003-2015 University of Illinois at Urbana-Champaign.

All rights reserved.

Portions of LLVM's System library:

Copyright (C) 2004 eXtensible Systems, Inc.

Developed by:

LLVM Team

University of Illinois at Urbana-Champaign

<http://llvm.org>

Permission is hereby granted, free of charge, to any person obtaining a copy of this software and associated documentation files (the "Software"), to deal with the Software without restriction, including without limitation the rights to use, copy, modify, merge, publish, distribute, sublicense, and/or sell copies of the Software, and to permit persons to whom the Software is furnished to do so, subject to the following conditions:

\* Redistributions of source code must retain the above copyright notice, this list of conditions and the following disclaimers.

\* Redistributions in binary form must reproduce the above copyright notice, this list of conditions and the following disclaimers in the documentation and/or other materials provided with the distribution.

\* Neither the names of the LLVM Team, University of Illinois at Urbana-Champaign, nor the names of its contributors may be used to endorse or promote products derived from this Software without specific prior written permission.

THE SOFTWARE IS PROVIDED "AS IS", WITHOUT WARRANTY OF ANY KIND, EXPRESS OR IMPLIED, INCLUDING BUT NOT LIMITED TO THE WARRANTIES OF MERCHANTABILITY, FITNESS FOR A PARTICULAR PURPOSE AND NONINFRINGEMENT. IN NO EVENT SHALL THE CONTRIBUTORS OR COPYRIGHT HOLDERS BE LIABLE FOR ANY CLAIM, DAMAGES OR OTHER LIABILITY, WHETHER IN AN ACTION OF CONTRACT, TORT OR OTHERWISE, ARISING FROM, OUT OF OR IN CONNECTION WITH THE SOFTWARE OR THE USE OR OTHER DEALINGS WITH THE SOFTWARE.

## Vulkan Notice

Copyright (c) 2015-2016 The Khronos Group Inc.

Copyright (c) 2015-2016 LunarG, Inc.

Copyright (c) 2015-2016 Valve Corporation

The Vulkan Runtime is comprised of 100% open source components (MIT, and Apache 2.0). The text of such licenses is included below along with the copyrights.

ALL INFORMATION HERE IS PROVIDED "AS IS." LUNARG MAKES NO REPRESENTATIONS OR WARRANTIES, EXPRESS OR IMPLIED, WITH REGARD TO THIS LIST OR ITS ACCURACY OR COMPLETENESS, OR WITH RESPECT TO ANY RESULTS TO BE OBTAINED FROM USE OR DISTRIBUTION OF THE LIST. BY USING OR DISTRIBUTING THIS LIST, YOU AGREE THAT IN NO EVENT SHALL LUNARG BE HELD LIABLE FOR ANY DAMAGES WHATSOEVER RESULTING FROM ANY USE OR DISTRIBUTION OF THIS LIST, INCLUDING, WITHOUT LIMITATION, ANY SPECIAL, CONSEQUENTIAL, INCIDENTAL OR OTHER DIRECT OR INDIRECT DAMAGES.

## Softfloat Notice

Portions of the driver use the Softfloat floating point emulation library.

Softfloat Release 3e (<http://www.jhauser.us/arithmetric/SoftFloat.html>) is provided under the following terms:

Copyright 2011, 2012, 2013, 2014, 2015, 2016, 2017, 2018 The Regents of the University of California. All rights reserved.

Redistribution and use in source and binary forms, with or without modification, are permitted provided that the following conditions are met:

- 1.Redistributions of source code must retain the above copyright notice, this list of conditions, and the following disclaimer.
- 2.Redistributions in binary form must reproduce the above copyright notice, this list of conditions, and the following disclaimer in the documentation and/or other materials provided with the distribution.
- 3.Neither the name of the University nor the names of its contributors may be used to endorse or promote products derived from this software without specific prior written permission.

THIS SOFTWARE IS PROVIDED BY THE REGENTS AND CONTRIBUTORS "AS IS", AND ANY EXPRESS OR IMPLIED WARRANTIES, INCLUDING, BUT NOT LIMITED TO, THE IMPLIED WARRANTIES OF MERCHANTABILITY AND FITNESS FOR A PARTICULAR PURPOSE, ARE DISCLAIMED. IN NO EVENT SHALL THE REGENTS OR CONTRIBUTORS BE LIABLE FOR ANY DIRECT, INDIRECT, INCIDENTAL, SPECIAL, EXEMPLARY, OR CONSEQUENTIAL DAMAGES (INCLUDING, BUT NOT LIMITED TO, PROCUREMENT OF SUBSTITUTE GOODS OR SERVICES; LOSS OF USE, DATA, OR PROFITS; OR BUSINESS INTERRUPTION) HOWEVER CAUSED AND ON ANY THEORY OF LIABILITY, WHETHER IN CONTRACT, STRICT LIABILITY, OR TORT (INCLUDING NEGLIGENCE OR OTHERWISE) ARISING IN ANY WAY OUT OF THE USE OF THIS SOFTWARE, EVEN IF ADVISED OF THE POSSIBILITY OF SUCH DAMAGE.

## =====Apache 2.0=====

Licensed under the Apache License, Version 2.0 (the "License"); you may not use this file except in compliance with the License. You may obtain a copy of the License at

<http://www.apache.org/licenses/LICENSE-2.0>

Unless required by applicable law or agreed to in writing, software distributed under the License is distributed on an "AS IS" BASIS, WITHOUT WARRANTIES OR CONDITIONS OF ANY KIND, either express or implied. See the License for the specific language governing permissions and limitations under the License.

## =====MIT=====

Copyright (c) 2009 Dave Gamble

Copyright (c) 2015-2016 The Khronos Group Inc.

Copyright (c) 2015-2016 Valve Corporation

Copyright (c) 2015-2016 LunarG, Inc.

Permission is hereby granted, free of charge, to any person obtaining a copy of this software and associated documentation files (the "Software"), to deal in the Software without restriction, including without limitation the rights to use, copy, modify, merge, publish, distribute, sublicense, and/or sell copies of the Software, and to permit persons to whom the Software is furnished to do so, subject to the following conditions:

The above copyright notice and this permission notice shall be included in all copies or substantial portions of the Software.

THE SOFTWARE IS PROVIDED "AS IS", WITHOUT WARRANTY OF ANY KIND, EXPRESS OR IMPLIED, INCLUDING BUT NOT LIMITED TO THE WARRANTIES OF MERCHANTABILITY, FITNESS FOR A PARTICULAR PURPOSE AND NONINFRINGEMENT. IN NO EVENT SHALL THE AUTHORS OR COPYRIGHT HOLDERS BE LIABLE FOR ANY CLAIM, DAMAGES OR OTHER LIABILITY, WHETHER IN AN ACTION OF CONTRACT, TORT OR OTHERWISE, ARISING FROM, OUT OF OR IN CONNECTION WITH THE SOFTWARE OR THE USE OR OTHER DEALINGS IN THE SOFTWARE.

## Trademarks

NVIDIA, the NVIDIA logo, NVIDIA nForce, GeForce, NVIDIA Quadro, are registered trademarks or trademarks of NVIDIA Corporation in the United States and/or other countries.

HDMI, the HDMI logo, and High-Definition Multimedia Interface are trademarks or registered trademarks of HDMI Licensing LLC.

OpenGL® and the oval logo are trademarks or registered trademarks of Silicon Graphics, Inc. in the United States and/or other countries worldwide. Additional license details are available on the SGI website.

OpenCL and the OpenCL logo are trademarks of Apple Inc. used by permission by Khronos.

Vulkan and the Vulkan logo are trademarks of the Khronos Group Inc.

Other company and product names may be trademarks or registered trademarks of the respective owners with which they are associated.

## Copyright



